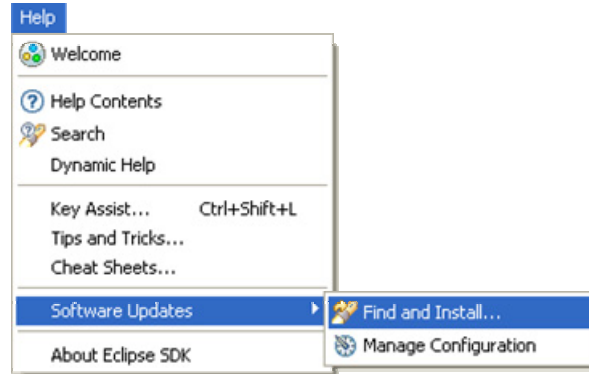


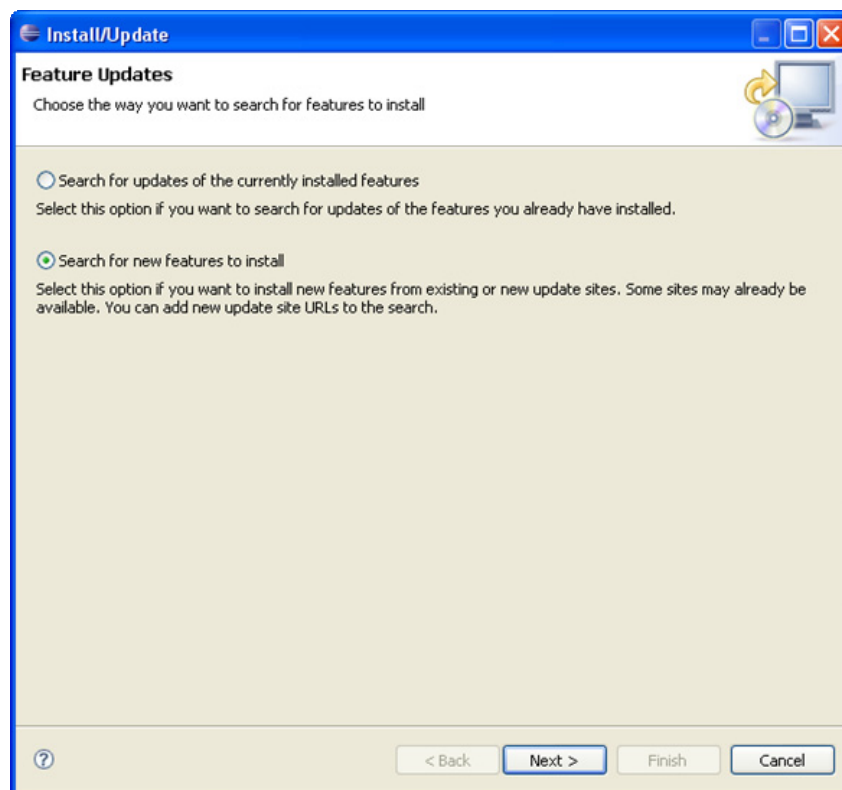
HOW TO INTALL

To install TPTP packages using the Eclipse Update Manager:

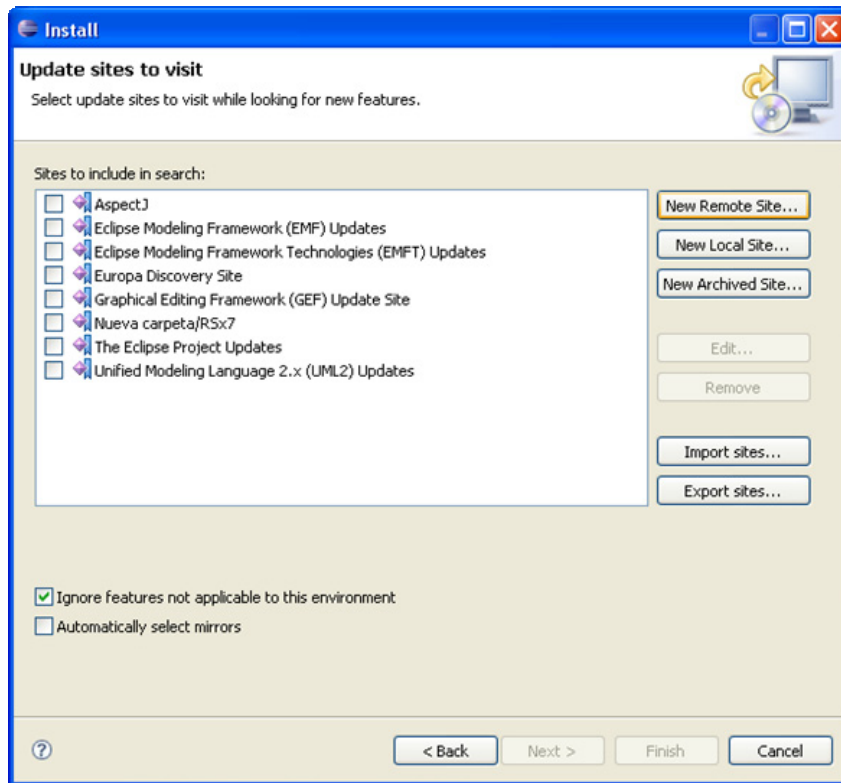
1. From the **Help** menu in Eclipse, select **Software Updates > Find and Install**.



2. Select the **Search for new features to install** radio button. Click **Next**.

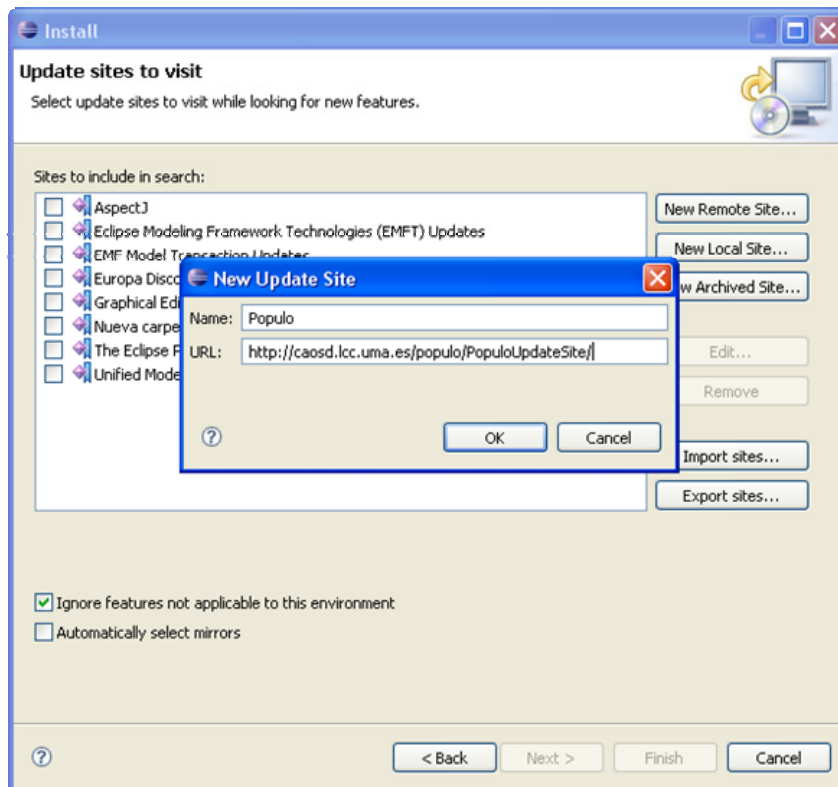


3. Add a new update site by clicking on **New Remote Site**.

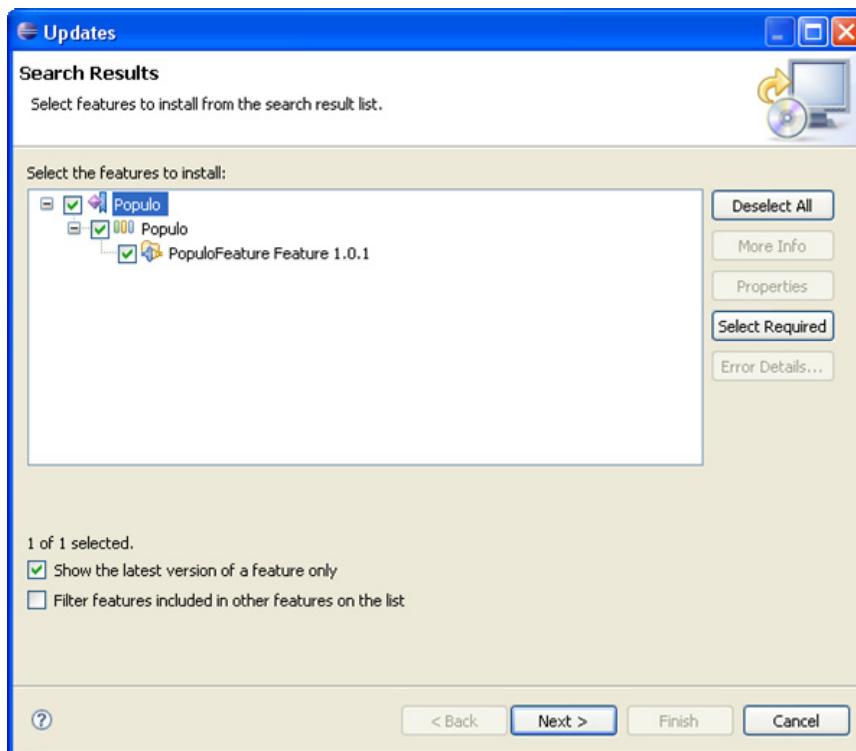


4. Enter the following name and URL and click **OK**:

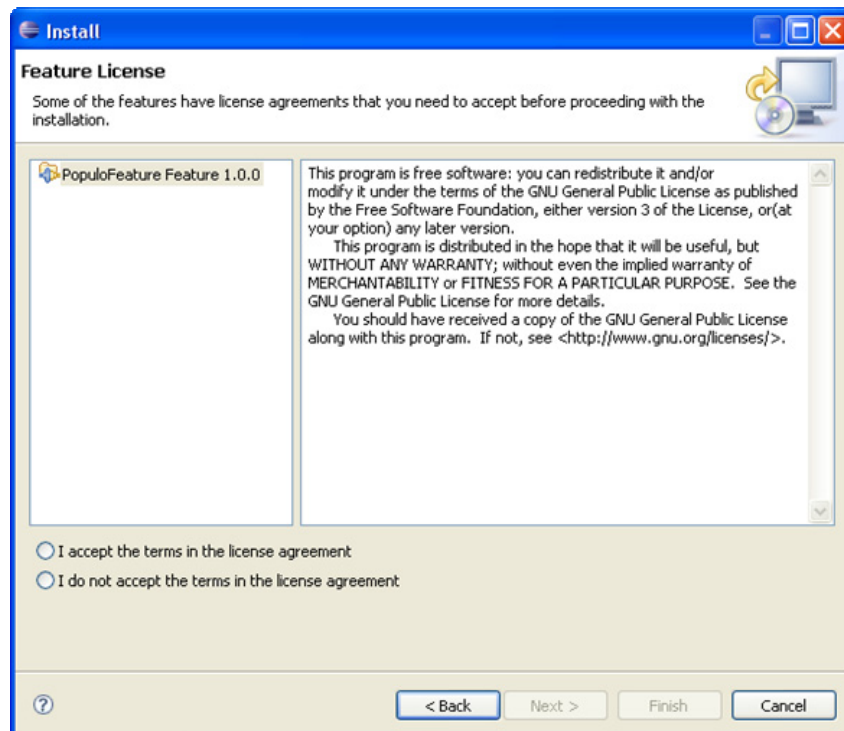
- Name: Populo
- URL: <http://eclipse.org/tptp/updates/site.xml>



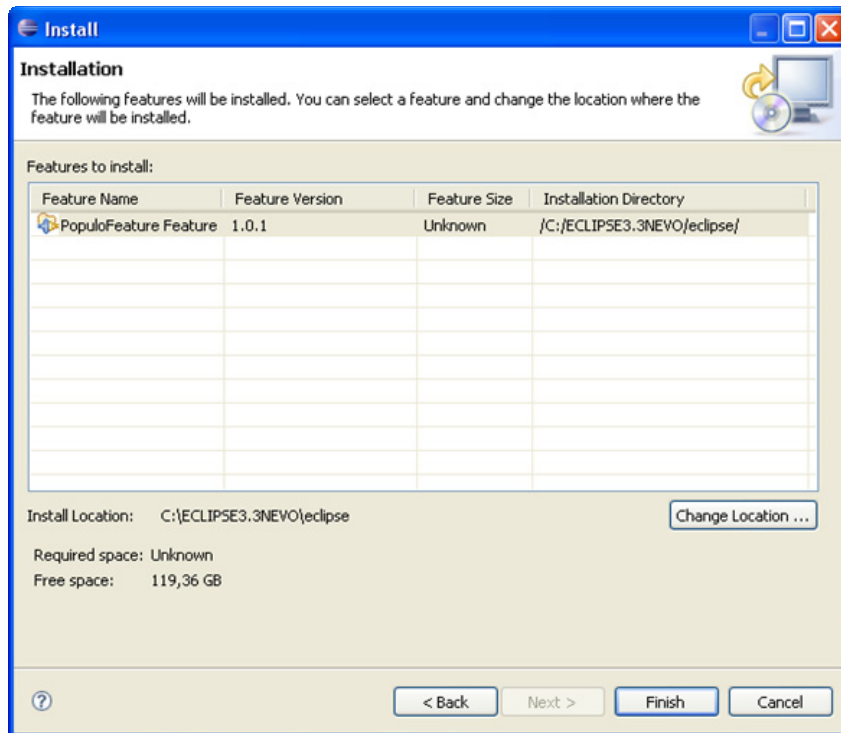
5. In the "Search Results" dialog box, select the features to install. Then click **Next**.



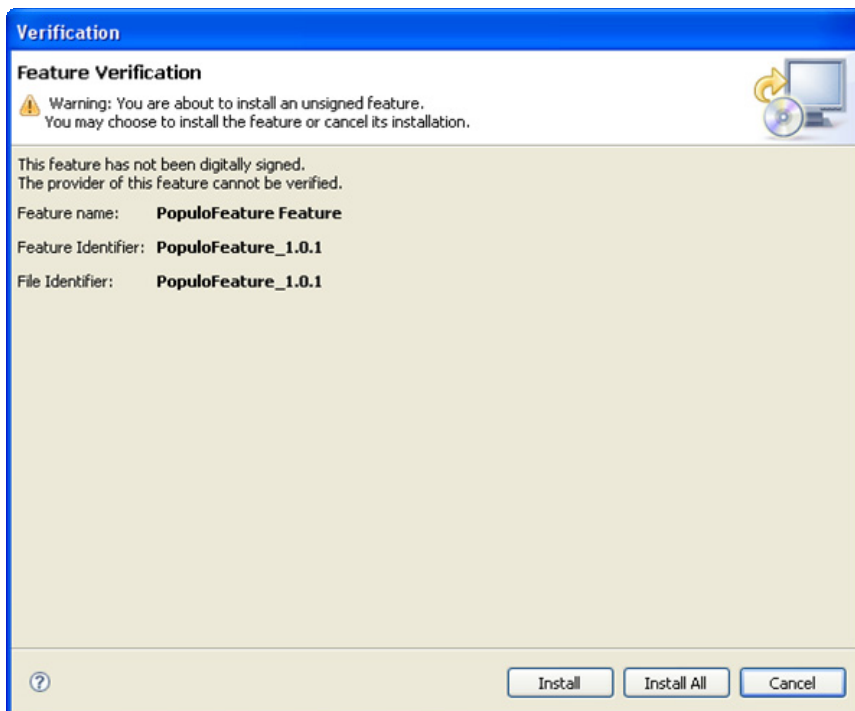
6. In the "Feature License" dialog box, accept the license and click **Next**.



7. In the "Installation" dialog box, verify the features to be installed and change install location if necessary. Then click **Finish**.



8. After you click Finish, you will be presented a confirmation about a digital signature. Click **Install All**.



9. When done, restart your workbench.